

Dfp Undercut Spring anchor

innovative Stone & Tile cladding solutions

DAE DONG
STONE & TECHNOLOGY

www.dfpsystem.co.kr


DFP Undercut Spring anchor

Product description

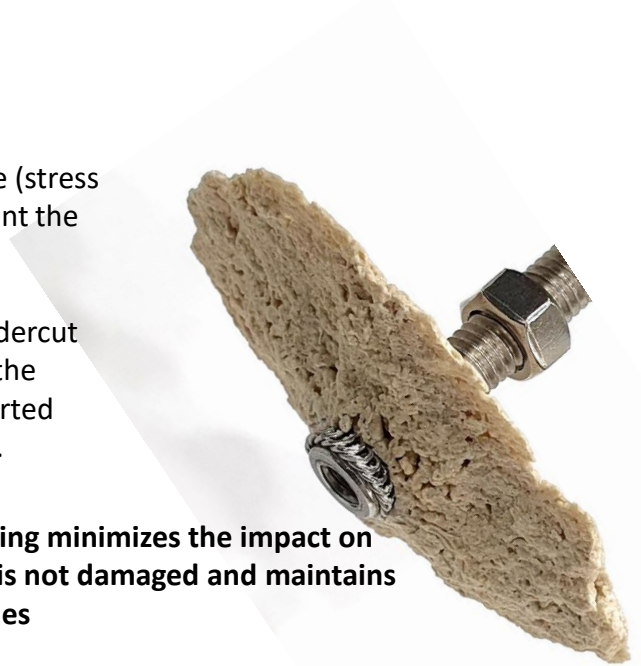
Undercut anchor for natural stone from 2 cm & Ceramic tile from 12mm panel thickness .

Advantages/benefits

DFP spring anchor minimizes the impact on the stone (stress-free) when inserted into the Undercut Hole to prevent the fracture of the stones or the occurrence of cracks

The undercut hole() is formed of an irregular undercut hole due to the error of the hole forming device and the wear of the drill bit. When an undercut anchor is inserted into an irregular hole, the stone may break or fall out.

DFP Spring Anchor's flexible structure expansion spring minimizes the impact on the stone when the anchor is inserted, so the stone is not damaged and maintains excellent pulling force even in irregular undercut holes

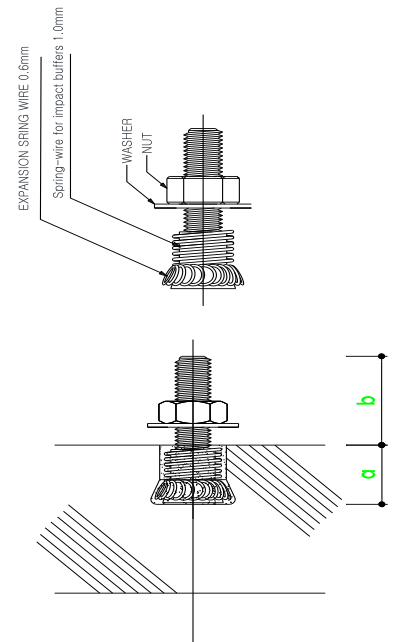


Installation

Special drilling machine or DFP Portable undercut drill machine from DFP system are necessary for the drilling of the undercut hole.

Technical data

Type	Application	Stone /Tile Thickness mm	Anchorage depth mm	Thread diameter mm
Protruding type	Stone	20mm	12 -16	M6
Embedded type for stone	Stone	20mm	12-16	M6
Embedded type for ceramic tile	Ceramic tile	12mm	6-8	M6



DFP Undercut Spring anchor

Types of Spring anchor

- Protruding type for stone



- Embedded type for stone




- Protruding type for ceramic tile



DFP Undercut Spring anchor

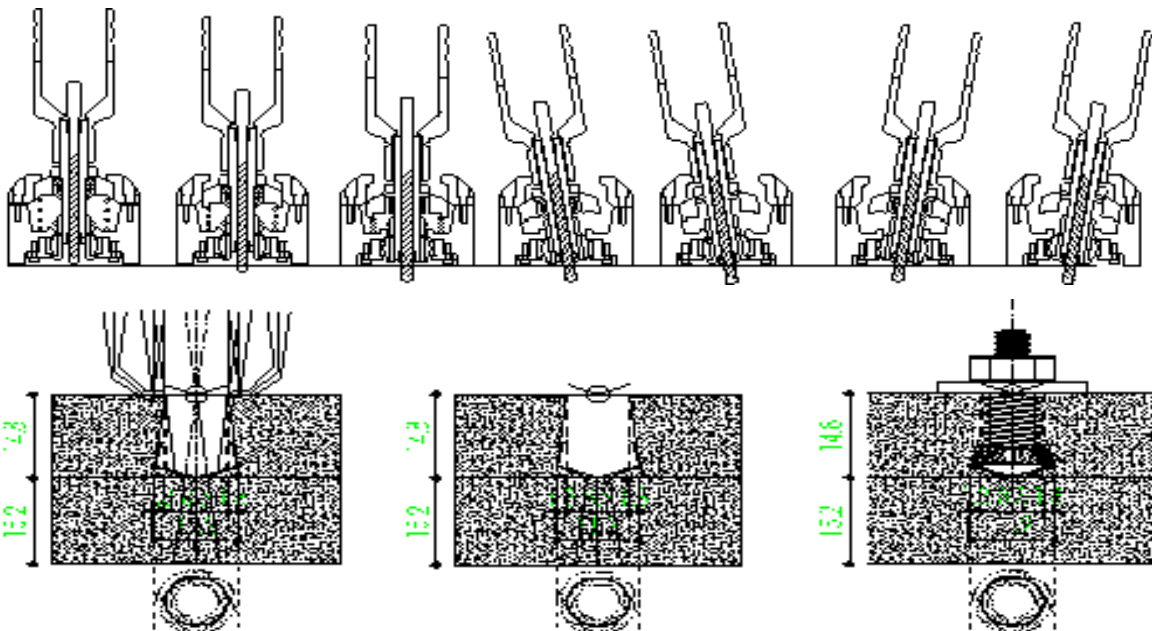
Technologies of drilling Undercut hole

- DFP Portable undercut drill machine

DFP Portable undercut drill machine is a device used to drill an undercut hole() in 30mm of stone.

Existing undercut hole machine uses Dia drill bit and water to drill undercut hole, but DFP Portable undercut drill machine uses Hard metal bit to drill undercut hole in dry method (no need of water),so it yields high workability and reliability.

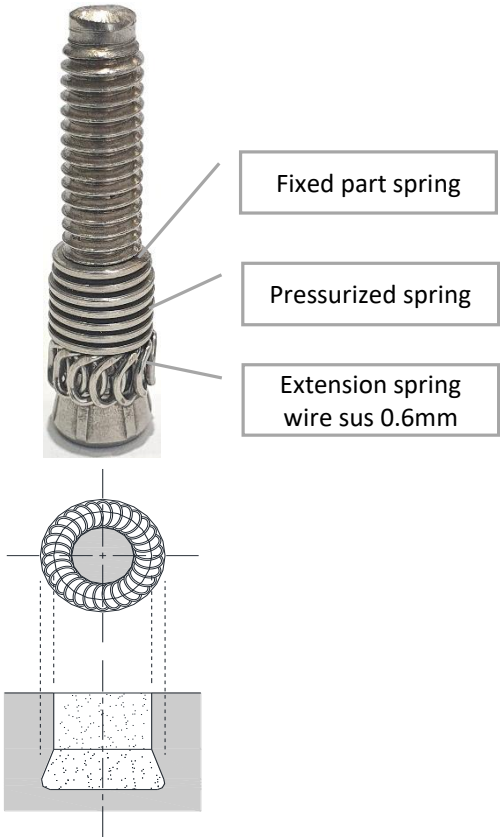
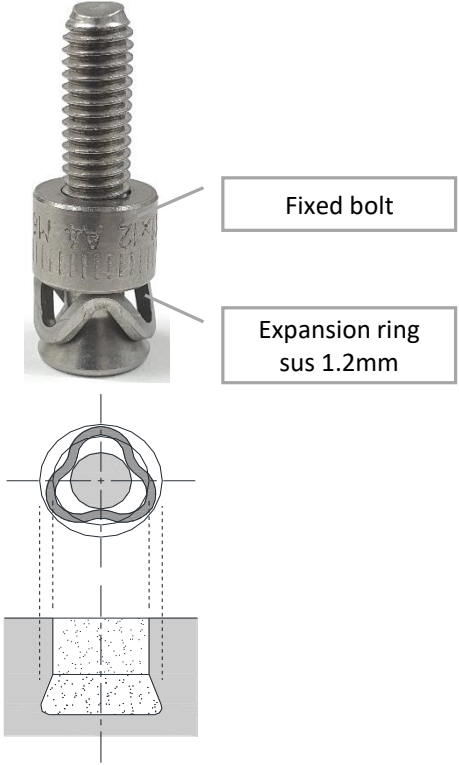
The DFP Portable undercut drill machine only applies for Spring anchor. If it is used for undercut anchors of other products, proper pull-out performance cannot be exhibited.



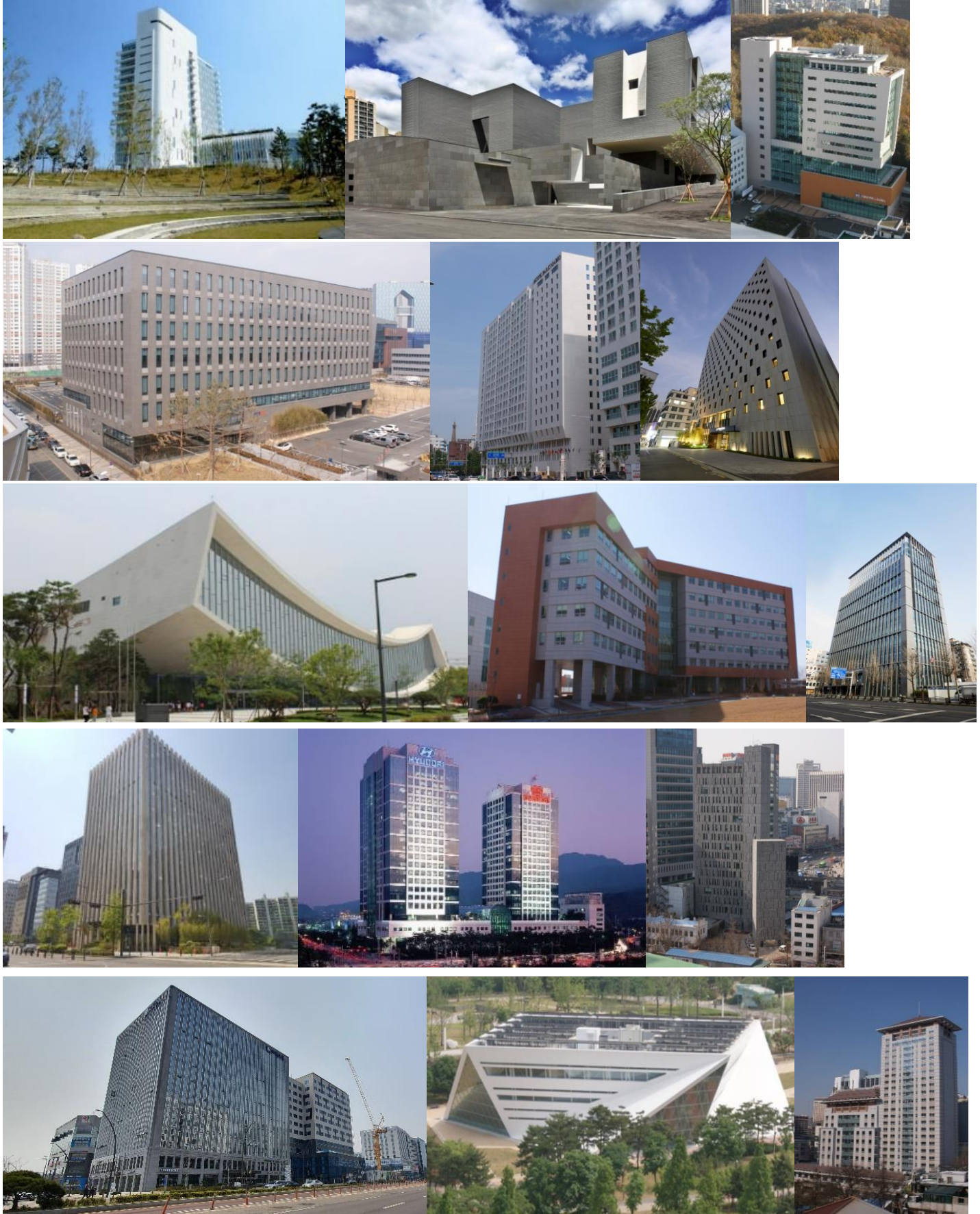
[undercut hole formation process]

DFP Undercut Spring anchor

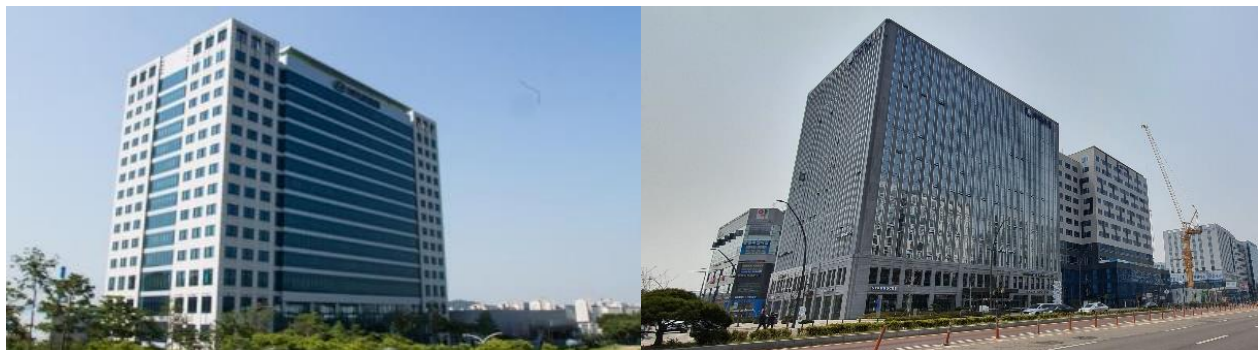
Comparison of undercut anchor - DFP Spring anchor & FZP anchor

DFP Spring anchor	FZP anchor
 <p>Fixed part spring</p> <p>Pressurized spring</p> <p>Extension spring wire sus 0.6mm</p> <p>Surface support method</p>	 <p>Fixed bolt</p> <p>Expansion ring sus 1.2mm</p> <p>Point support method</p>
<p>The extension spring of the spring anchor is made by overlapping two strands of 0.6 mm stainless wire, maintaining the thickness of 1.2 mm and forming a flexible. By forming a contact point on the entire bottom of the undercut hole of the stone, it exhibits stable a pulling force performance without stone damage or missing anchors even in irregular holes</p>	<p>The expansion ring of Fzp anchor is made of 1.2mm thick stainless steel. In order to expand the expansion ring (sus wire 1.2mm), it enables expand by forcing a lot of pressure, and a lot of pressure is applied to the stone during this process. If a 1.2mm expansion ring is inserted into an irregular hole, the stone may be damaged or broken, causing a dropout phenomenon.</p>
<p>Made in korea</p>	<p>Made in germany</p>

DFP Undercut Spring anchor



DFP Undercut Spring anchor



DFP Undercut Spring anchor

